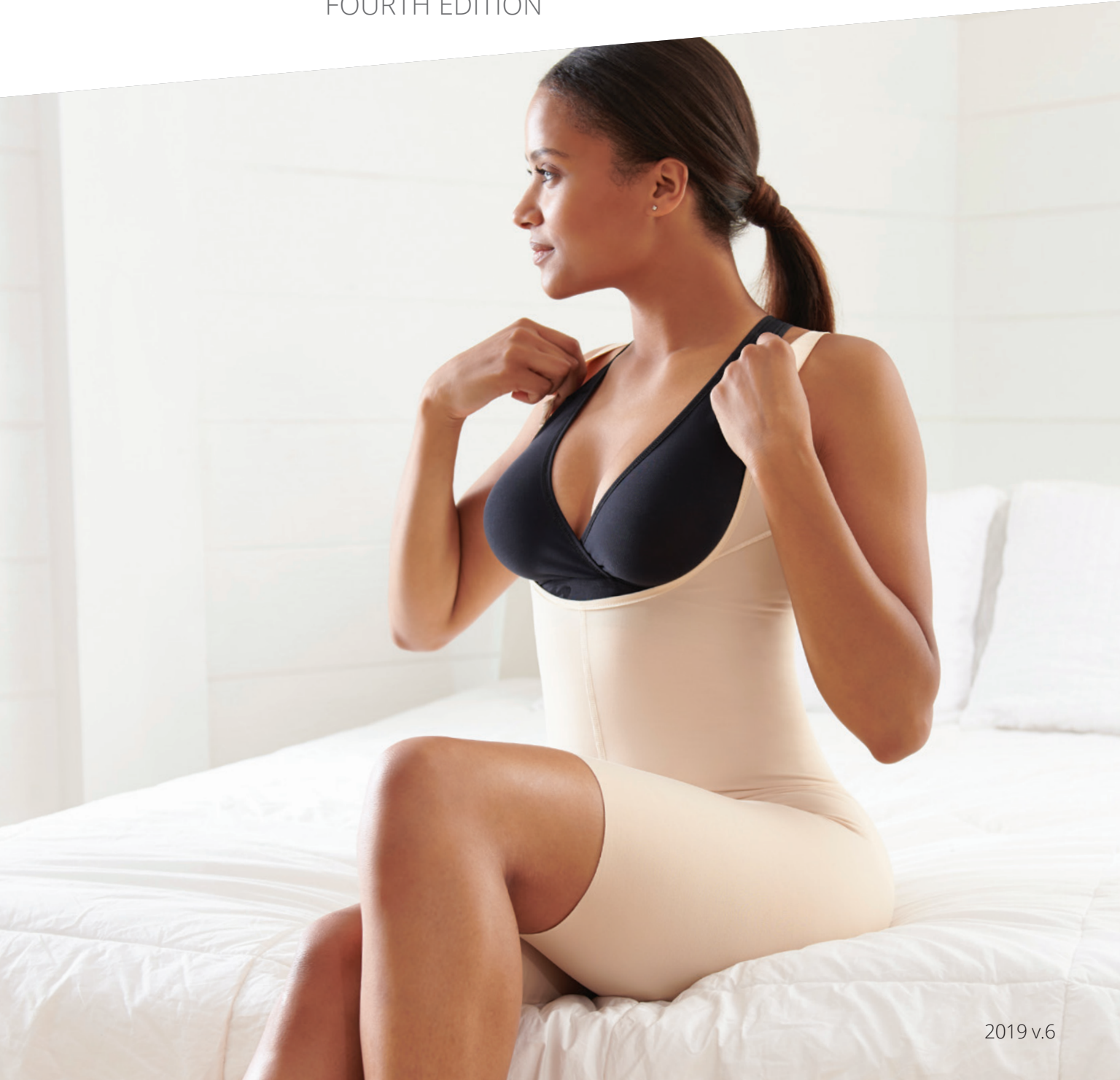




Marena RECOVERY

Product Catalog 2019

FOURTH EDITION





THE MARENA GROUP LLC

Since 1994, Marena has been dedicated to advancing the effective use of medical-grade compression through research, innovation, design and manufacturing of garments for long-term wellness benefits. Our mission is to help patients around the world recover comfortably and with confidence.



Table of Contents

The Marena Advantage 4

Power of Compression 5

TriFlex™ Fabric Advantage..... 6

The Recovery Journey 8

Bras and Breast Care

BY STYLE

FlexFit™ Bra Range 10

Stabilizers and Wraps..... 17

Womens Vests & Sleeves..... 18

Womens Body Sculpting 22

BY STYLE

Bodysuits..... 24

Girdles 26

Brazilian Butt Lift..... 28

Post-Pregnancy 29

Bodysuits with Bra 30

Mens Body Sculpting..... 31

BY STYLE

Vests 32

Girdles and Bodysuits 35

Unisex Binders..... 37

**Drain Bulb Management
Garments** 40

Face Masks 41

Size Charts 44

Helpful Information 48

**Index of Garments by
Procedure and Step**..... 50

The Marena Advantage

Marena is known as the global leader and industry expert in the advancement and innovation of medical compression post-surgical recovery garments.

Superior Fabric and Comfort

- Proprietary TriFlex™ fabric with 3-Dimensional Stretch
- Rigorous fit and design process for results-oriented support and comfort
- Marena brand products are recognized as Class 1 medical devices

Constant Innovation

- Collaboration with leading physicians to design innovative and effective recovery garments
- Leading-edge designs and product solutions

Best Customer Service

- Personal service for help with sizing and product information
- Highest quality US manufacturing
- Just-in-time manufacturing and on-time delivery options
- Global distribution to over 50 countries



Marena Recovery offers innovative garments and bras made from our patented fabric to **help recovery and ensure comfort**. Our fabric, design and fit make a garment that delivers targeted compression and superior comfort.



The Healing Power of Compression

Since the 1970s, medical research¹ has shown that medical-grade compression garments may help aid the body's healing process from procedures that cause trauma to the body.

Primary Medical Benefits¹

- May help reduce swelling
- May help reduce pain
- May help reduce bruising
- May help support the skin during healing to improve softness and smoothness

Marena Recovery offers exclusive, patented fabric in all our garments and bras to **help you recover confidently.**

¹ Dr. Yves-Gerard Illouz, MD, *Body Sculpturing by Lipoplasty, a Clinical Study on Post-Operative Compression Therapy*

Comfort Equals Compliance

We consider the body's healing process and how to maximize comfort and compliance. Doctors can help their patients' recovery by providing Marena garments for all steps.

"External compression promotes the flow of tissue fluid that naturally accumulates in an area of surgical trauma, back to the (body's) general circulation through the lymphatic channels."

– Dr. Paul Fortes, MD
Board-Certified Plastic Surgeon, Houston, TX



The TriFlex™ Fabric Advantage

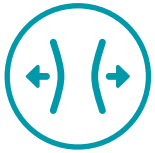
Our patented TriFlex™ fabric is engineered for invasive, minimal and non-invasive procedures. It provides targeted compression with consistent stretch on the skin's surface without compromising fit or comfort. It may improve skin laxity naturally and provide smoother results. With moisture wicking and cooling properties, combined with Silvadur™ antimicrobial protection, Marena Recovery garments help improve comfort, which leads to better compliance and outcomes.

Features and Benefits



Consistent, Targeted Compression

3D Stretch provides consistent, targeted compression that does not constrict or bind when stretched



Superior Stretch

Stretches up to 250% of the original length

Stretches up to 100% more than competitors



Silhouette Forming

Smooths the body and provides a superior silhouette form



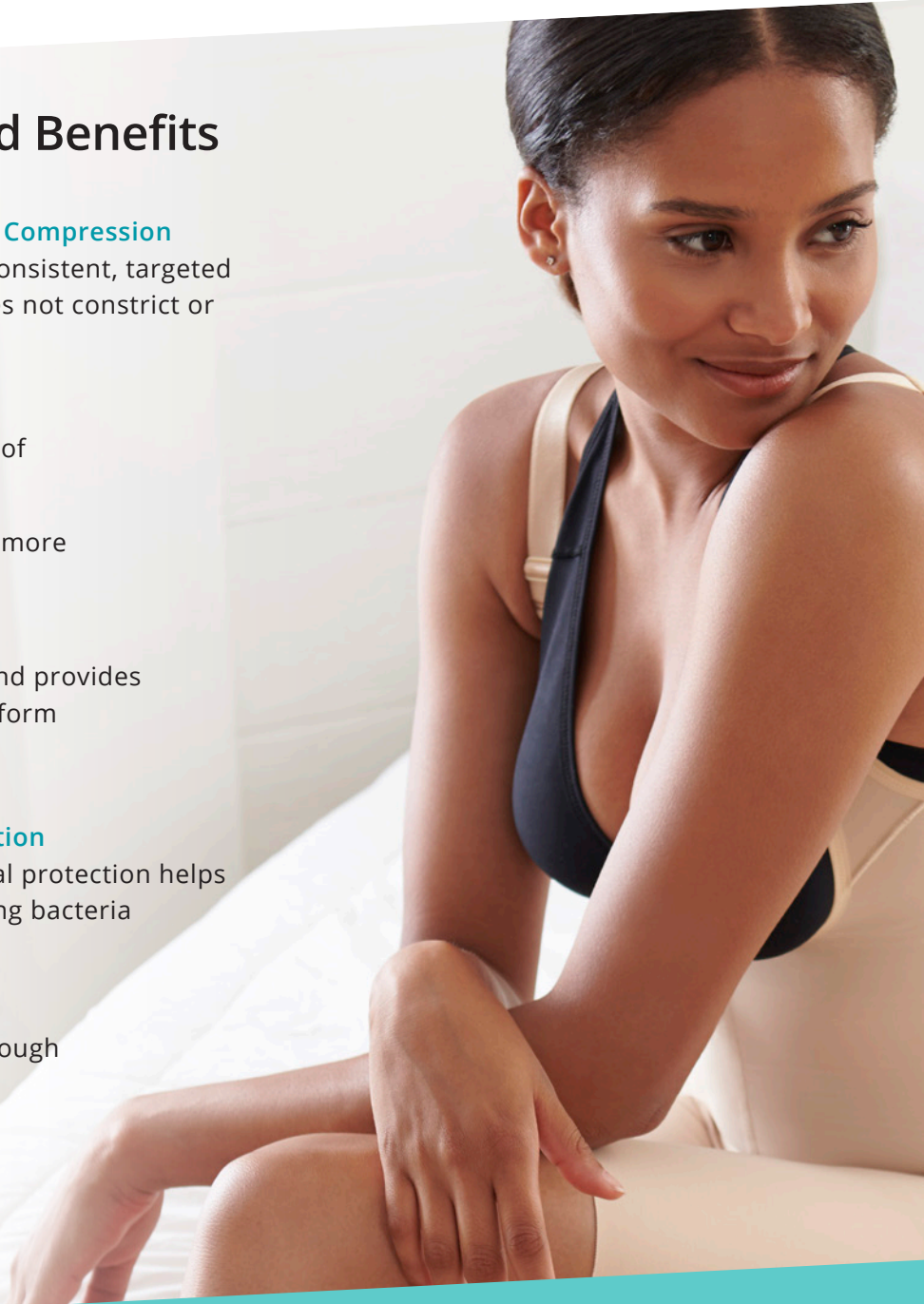
Antimicrobial Protection

Silvadur™ antimicrobial protection helps neutralize odor causing bacteria



Cooling Properties

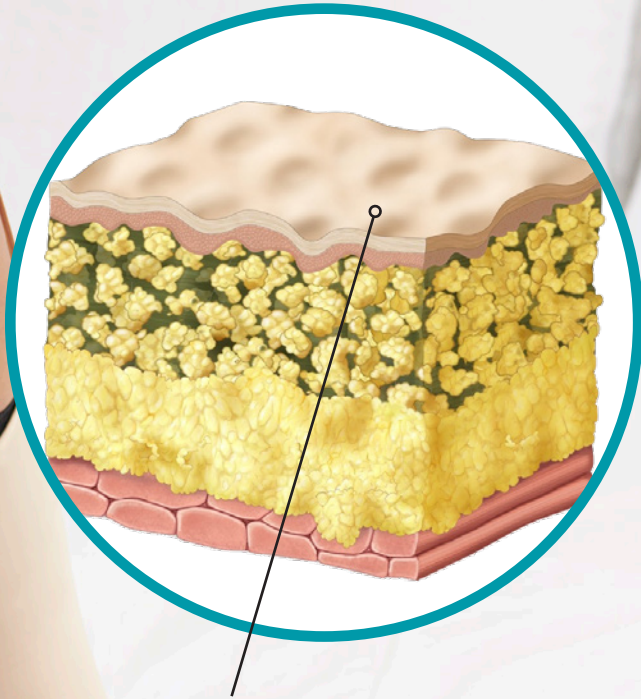
Improves comfort through moisture wicking and cooling



“Put simply, our patented fabric is like no other.”

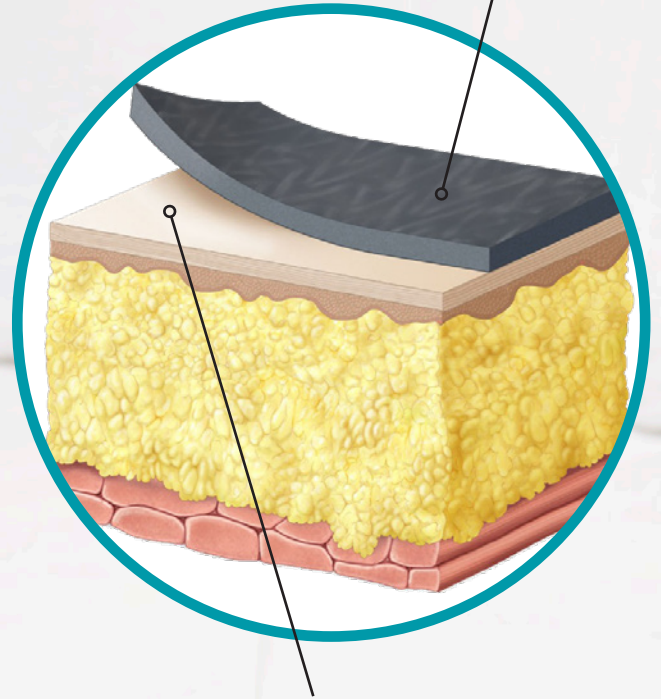
MARENA TRIFLEX™ TECHNOLOGY

WITHOUT COMPRESSION OR
WITH POOR COMPRESSION



Rough, inconsistent non-compressed
or poorly compressed skin layer

WITH MARENA
COMPRESSION



Smooth, consistent
compressed skin layer

The Recovery Journey



The healing process after procedures that cause trauma to the body, whether surgical or minimally invasive, lasts an average of 12 weeks, and has distinct stages.

Marena Recovery garments and bras help improve comfort and support during each step of healing.

“Compression essentially is an external force that applies to the area of trauma, surgical trauma in this case. And this external compression promotes the flow of tissue fluid that naturally accumulates in an area of surgical trauma back to the general circulation through the lymphatic channels.”

– Dr. Paul Fortes, MD
Board-Certified Plastic Surgeon, Houston, TX



Step 1 | 0-4 weeks after surgery

Step One garments are designed to be worn immediately after surgery and during the crucial first four weeks of recovery. They are easy to put on and adjust to improve comfort and compliance.

FABRIC: Marena's patented TriFlex™ fabric for consistent stretch and targeted compression benefits

FIT: Easy to put on and adjust to fluctuations in swelling

FEATURES: Adjustable closures
Adjustable shoulder straps
Open or accessible crotch



Step 2 | 4-12 weeks after surgery

Step 3 | Post Recovery

Step Two garments help patients continue the recovery benefits as they resume their day-to-day activities. They work well under clothes and are comfortable for all-day wear. Patients often need a smaller size in Step Two garments.

Marena Shape and Marena Sport lines offer continued benefits post-recovery, with styles that are comfortable under clothes and provide all-day compression and support benefits.

FABRIC: Marena's patented TriFlex™ fabric for consistent stretch and targeted compression benefits

FABRIC: Marena's patented TriFlex™ fabric for consistent stretch and targeted compression benefits

FIT: Comfortable under clothes, typically smaller size needed

FIT: Curvy and Straight fits available to accommodate all body types

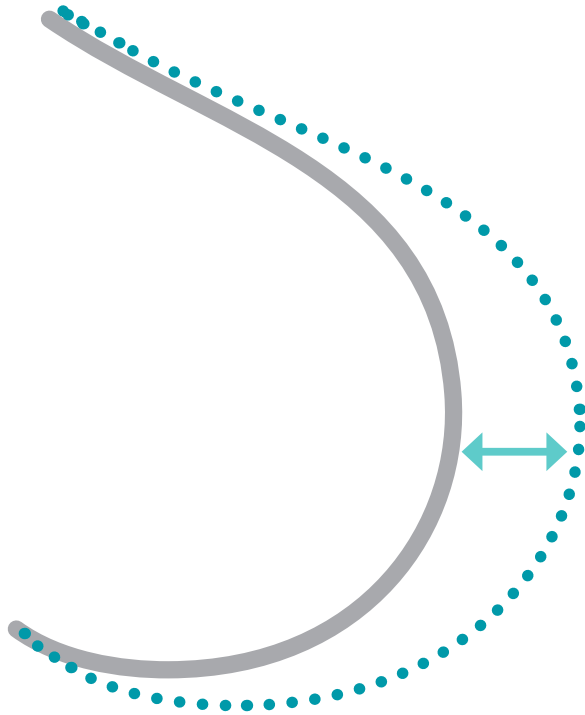
FEATURES: Minimal or no closures
Seams sewn on outside for comfort
Open or accessible crotch

FEATURES: No closures
Comfortable under clothes
Closed crotch



FlexFit™ Bra Range

Marena Recovery introduces new bras for breast augmentation and breast reduction that integrate two cup sizes into each bra without any compromise in fit or comfort. Our new FlexFit™ bra range provides patients with a comfortable garment that promotes better compliance which leads to better post-operative outcomes.



FLEXFIT™ BI-CUP SIZING

Our FlexFit™ bra range accommodates two cup sizes into one bra which:

- Accommodates variation in breast size due to post-operative swelling
- Adapts to the variation in the achieved implant projection compared to pre-surgery estimates

FlexFit™ sizing is made possible by the unique 3-Dimensional stretch characteristics of Marena's patented TriFlex™ material. Our TriFlex™ fabric provides consistent, targeted compression that does not constrict or bind when stretched, for superior comfort and wearability.



FlexFit™ Bra Features & Benefits

Extended Length & Soft Elastic Band

Positioned below the inframammary
fold to avoid incision interference
and irritation



Outward Facing Seams Prevents rubbing and/or disturbing the sutures



Positioning Guides Helps aid in positioning the stabilizer band



Detachable Shoulder Strap (Opens Chest-Side) Allows for easy clinical viewing and donning



Padded, Hook-and-Eye Shoulder Closure Provides extra comfort and adjustability for the patient



Zipper Lock Closure Prevents zipper from accidentally sliding open





Marena FlexFit™ Sizing

Our new FlexFit™ Size chart helps you find the right bra in two simple steps.



Step 1. Measure your under bust for band size.



Step 2. Measure the fullest part of your bust to find your cup size.

Please check your measurements and use the size chart above to determine the right size.

UNDERBUST 25-26 IN 63.5-66 CM	US 30	BUST	30-31 IN 76-79 CM AA/A	32-33 IN 81-84 CM B/C	
UNDERBUST 27-28 IN 68.5-71 CM	US 32	BUST	32-33 IN 81-84 CM AA/A	34-35 IN 86-89 CM B/C	36-37 IN 91.5-94 CM D/E
UNDERBUST 29-30 IN 73.5-76 CM	US 34	BUST	34-35 IN 86-89 CM AA/A	36-37 IN 91.5-94 CM B/C	38-39 IN 96.5-99 CM D/E
UNDERBUST 31-32 IN 79-81 CM	US 36	BUST	36-37 IN 91.5-94 CM AA/A	38-39 IN 96.5-99 CM B/C	40-41 IN 102-104 CM D/E
UNDERBUST 33-34 IN 84-86.5 CM	US 38	BUST	38-39 IN 96.5-99 CM AA/A	40-41 IN 102-104 CM B/C	42-43 IN 107-109 CM D/E
UNDERBUST 35-36 IN 89-91.5 CM	US 40	BUST	40-41 IN 102-104 CM AA/A	42-43 IN 107-109 CM B/C	44-45 IN 112-114.5 CM D/E
UNDERBUST 37-38 IN 94-96.5 CM	US 42	BUST	42-43 IN 107-109 CM AA/A	44-45 IN 112-114 CM B/C	46-47 IN 117-119.5 CM D/E
UNDERBUST 39-40 IN 99-102 CM	US 44	BUST	44-45 IN 112-114 CM AA/A	46-47 IN 117-119.5 CM B/C	48-49 IN 122-124.5 CM D/E
UNDERBUST 41-42 IN 104-107 CM	US 46	BUST	46-47 IN 117-119.5 CM AA/A	48-49 IN 122-124.5 CM B/C	50-51 IN 127-129.5 CM D/E
UNDERBUST 43-44 IN 109-112 CM	US 48	BUST	48-49 IN 122-125.5 CM AA/A	50-51 IN 127-129.5 CM B/C	52-53 IN 132-135 CM D/E
UNDERBUST 45-46 IN 114-117 CM	US 50	BUST	50-51 IN 127-129 CM AA/A	52-53 IN 132-135 CM B/C	54-55 IN 137-140 CM D/E

Marena FlexFit™ Bra Range

Points of Measure: Underbust, Fullest Part of Bust

Size chart on page 12



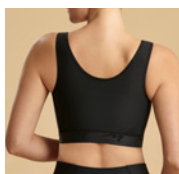
B01G NEW FLEXFIT™ ORIGINAL BRA

Designed for full adjustability and comfort following breast augmentation, reduction, and other aesthetic breast procedures.

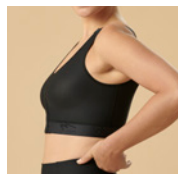
- FlexFit™ cups
- Microfiber hook-&-eye front closure
- Microfiber hook-&-eye- shoulder closures
- Extended length to avoid inframammary fold

Sizes: 30-40 A/A, 30-42 B/C, 32-42 D/E

Available in: **H** **B**



Back Detail



Side Detail

AUGMENTATION/REDUCTION



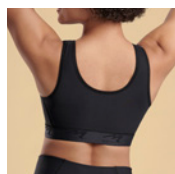
B2 NEW FLEXFIT™ SHIRRED FRONT

This shirred cup design features kiss-molded cups for improved compression support following breast augmentation and other aesthetic breast procedures.

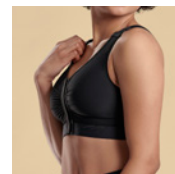
- FlexFit™ shirred cups
- Microfiber hook-&-eye front closure
- Microfiber hook-&-eye- shoulder closures
- Outward facing seams

Sizes: 30-50 A/A, 30-50 B/C

Available in: **H** **B**



Back Detail



Side Detail

AUGMENTATION

Marena FlexFit™ Bra Range

Points of Measure: Underbust, Fullest Part of Bust

Size chart on page 12



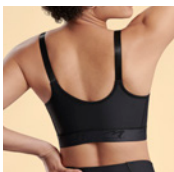
B11 NEW FLEXFIT™ MEDIUM COVERAGE

This medium-coverage bra features front-close, detachable straps for clinical viewing following breast augmentation procedures.

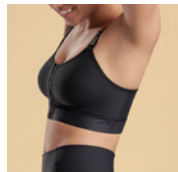
- FlexFit™ cups
- Detachable, slide-adjustable shoulder straps with cross back option
- Microfiber 3-row hook-&-eye front closure
- Outward facing seams
- Extended length to avoid the inframammary fold

Sizes: 30-38 B/C, 32-38 D/E

Available in: H B



Back Detail



Side Detail

AUGMENTATION



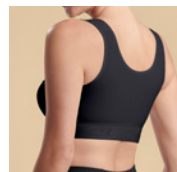
B15 NEW FLEXFIT™ IMPLANT STABILIZER

FlexFit™ Stabilizer is designed with a built-in elastic implant stabilizer band that helps stabilize the upward movement of the implants and provide support to the chest wall.

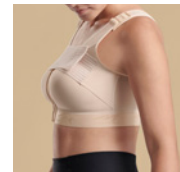
- FlexFit™ cups
- Built-in elastic implant stabilizer band with positioning dots
- Outward facing seams
- Extended length to avoid the inframammary fold

Sizes: 30-42B/C, 32-42 D/E

Available in: H B



Back Detail



Side Detail

AUGMENTATION

Marena FlexFit™ Bra Range

Points of Measure: Underbust, Fullest Part of Bust

Size chart on page 12



B16 NEW FLEXFIT™ ULTRA-HIGH COVERAGE

Designed for comfortable, adjustable support following breast reduction, augmentation, and other aesthetic procedures, this bra features padded hook-&-eye front and shoulder closures.

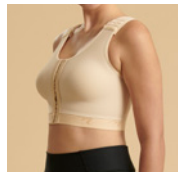
- FlexFit™ cups
- Padded hook-and-eye shoulder closure
- Microfiber, hook-&-eye front closure
- Extended length to avoid the inframammary fold
- Outward facing seams

Sizes: 30-44 A/A, 32-44 B/C, 34-50 D/E

Available in: **H** **B**



Back Detail



Side Detail

REDUCTION



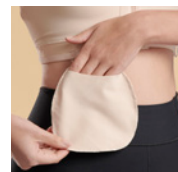
B19 NEW FLEXFIT™ DRAIN BULB MANAGEMENT

This patent-pending bra is designed for comfortable support and management of drain bulbs and tubes, with side-entry openings for tubes, and included pouches and rings.

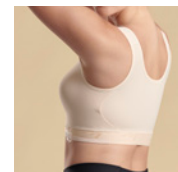
- FlexFit™ cups
- Side-entry opening for tubes
- 2 Pouches and 4 Rings included
- Padded hook-&-eye shoulder closures
- Combined padded hook-&-eye/zipper front closure

Sizes: 30-44 A/A, 32-44 B/C, 34-46 D/E

Available in: **H** **B**



Pouch Detail



Side Detail

REDUCTION

Marena FlexFit™ Bra Range

Points of Measure: Underbust, Fullest Part of Bust

Size chart on page 12



B09Z NEW FLEXFIT™ ULTRA-LOW COVERAGE ZIP-FRONT

FlexFit™ Ultra-Low Coverage features low back coverage and detachable slide-adjustable shoulder straps that allow for easy clinical viewing and donning.

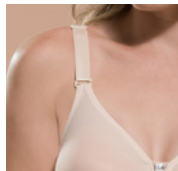
- FlexFit™ cups
- Detachable, slide-adjustable shoulder straps
- Zipper-lock front closure
- Microfiber 3-row hook-&-eye back closure
- Outward facing seams

Sizes: 30-38 B/C, 32-38 D/E

Available in: **H** **B**



Back Detail



Strap Detail

AUGMENTATION



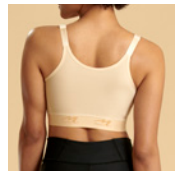
BNRZ NEW FLEXFIT™ HIGH COVERAGE ZIP-FRONT

This high-coverage bra features detachable, slide-adjustable shoulder straps that allow for full adjustability and clinical viewing following breast augmentation and reduction procedures.

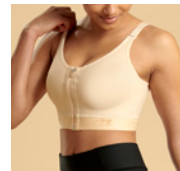
- FlexFit™ cups
- Detachable slide-adjustable, elastic shoulder straps
- Combined padded hook-&-eye/zipper front closure
- High back coverage

Sizes: 30-44 AA/A, 32-44 B/C, 34-46 D/E

Available in: **H** **B**



Back Detail



Side Detail

AUGMENTATION/REDUCTION

Stabilizers and Wraps

Points of Measure: Bust

Universal sizing: Fits up to a 48-inch bust



ISB

Recover in comfort and prevent implants from shifting with this lightweight elastic implant stabilizer band. Fits up to a 48-inch bust.

Available in: **B** **W**



ISB-05

Recover in comfort and always have a fresh stabilizer band with this ISB 5-pack.

Available in: **W**



ISBX

This implant stabilizer band kit has a center divider to help prevent implants from shifting. Fits up to a 48-inch bust.

Available in: **W**



BW-9

This disposable breast wrap provides protection and support for up to 48-hours. Fits up to a 48-inch bust.

Available in: **W**

Vests and Sleeves

Marena Recovery Vests and Sleeves are designed to provide consistent medical-grade compression to help improve comfort after procedures of the chest, upper back, arms and abdomen.

Vests 19
 Vests with Sleeves.....20
 Sleeves21

Step 1 & 2

Typical Medical Use:

Brachioplasty, mastopexy, reduction, augmentation and reconstruction mammoplasty

Available Coverage:

Chest, abdomen, back, upper back and arms



Size	Arm	Bust	Underbust
2XS	8.75-9.5 IN	30-32 IN	23-25 IN
	22-24 CM	76-81 CM	58-64 CM
XS	9.5-10.25 IN	32-34 IN	25-27 IN
	24-26 CM	81-86 CM	64-69 CM
S	10.25-10.75 IN	34-36 IN	27-29 IN
	26-27 CM	86-91 CM	69-74 CM
M	10.75-11.25 IN	36-38 IN	29-31 IN
	27-29 CM	91-97 CM	74-79 CM
L	11.25-12 IN	38-40 IN	31-33 IN
	29-30 CM	97-102 CM	79-84 CM
XL	12-13 IN	40-43 IN	33-36 IN
	30-33 CM	102-109 CM	84-91 CM
2XL	13-14.25 IN	43-47 IN	36-40 IN
	33-36 CM	109-119 CM	91-102 CM
3XL	14.25-15.75 IN	47-51 IN	40-44 IN
	36-40 CM	119-130 CM	102-112 CM
4XL	15.75-17.5 IN	51-55 IN	44-48 IN
	40-44 CM	130-140 CM	112-122 CM



Points of Measure: Bust, Underbust, Bicep

Vests and Vests with Sleeves

Points of Measure: Bust, Underbust, Bicep

Size charts on page 18



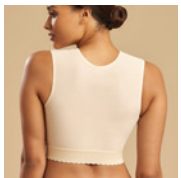
FVNS

Heal in comfort with total adjustability and ease of movement during Step One. Fits A-C cups.

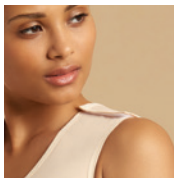
- Horizontal seamed cup
- Hook-&-loop adjustable shoulder strap
- 3-row hook-&-eye front closure
- Soft trim elastic band

Sizes: 2XS-4XL

Available in: **H** **B**



Back Detail



Strap Detail



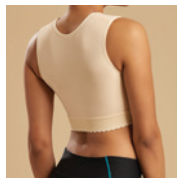
FVNSZ

Same design as FVNS with zipper front closure. Fits A-C cups.

- Hook-&-loop adjustable shoulder strap
- Padded hook-&-eye zipper front closure
- Soft trim elastic band
- Horizontal seamed cup

Sizes: 2XS-4XL

Available in: **H** **B**



Back Detail



Strap Detail



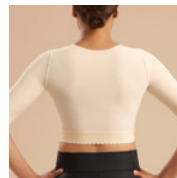
GFVM

Provides arm and back coverage, total adjustability and comfortable cup support and shaping. Fits A-C cups.

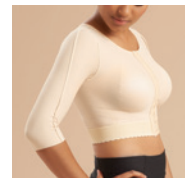
- Seamless cup
- $\frac{3}{4}$ -length sleeve
- 3-row hook-&-eye front closure
- Soft trim elastic band

Sizes: 2XS-4XL

Available in: **H** **B**



Back Detail



Side Detail

Vests with Sleeves

Points of Measure: Bust, Underbust, Bicep

Size charts on page 18



FV2M

Extended torso support, with full back and abdominal coverage, and ¾-length sleeves. Fits A-C cups.

- Full abdominal coverage
- Seamless cup
- ¾-length sleeve
- 3-row hook-&-eye front closure
- Soft trim elastic band

FV2L

Designed with full-length sleeves with graduated compression to maximize coverage and comfort.

- Graduated compression sleeves
- Seamless cup
- Full abdominal coverage
- 3-row hook-&-eye front closure
- Soft trim elastic band

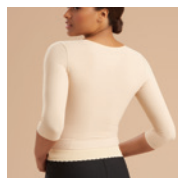
FVOM

Same design as GFVM with open bust option to accommodate larger bust sizes.

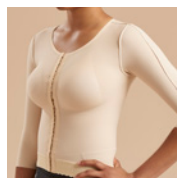
- ¾-length sleeve
- Open bust
- 3-row hook-&-eye front closure
- Soft trim elastic band

Sizes: 2XS-4XL

Available in: **H** **B**



Back Detail



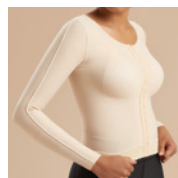
Side Detail

Sizes: 2XS-4XL

Available in: **H** **B**



Back Detail



Side Detail

Sizes: 2XS-4XL

Available in: **H** **B**



Back Detail



Front Detail

Sleeves

Points of Measure: Bicep

Size charts on page 18



SM

Easy-on, feather-light sleeves provide medium-length coverage on the arm for support through each step of healing.

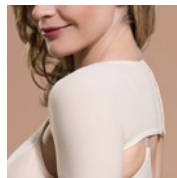
- 3-row hook-&-eye back closure
- $\frac{3}{4}$ -length sleeve

Sizes: 2XS-4XL

Available in: **H** **B**



Back Detail



Side Detail



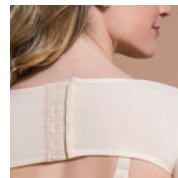
SL

Same design as SM with full-sleeve arm coverage, to support through each step of the recovery journey.

- 3-row hook-&-eye back closure
- Long sleeve length

Sizes: 2XS-4XL

Available in: **H** **B**



Back Detail



Side Detail

Body Sculpting Garments

Marena's patented TriFlex™ fabric provides the support of medical-grade compression to help improve comfort, with styles in a variety of lengths and coverage.

Bodysuits.....24-25
 Girdles.....26-27
 BBL Fat Transfer.....28
 Post-Pregnancy.....29
 Bodysuits with Bra.....30

Steps 1 & 2

Typical Medical Use:
 Liposuction, abdominoplasty, Brazilian butt lift, post-pregnancy

Available Coverage:
 Chest, abdomen, back, upper back, buttocks, arms, and legs

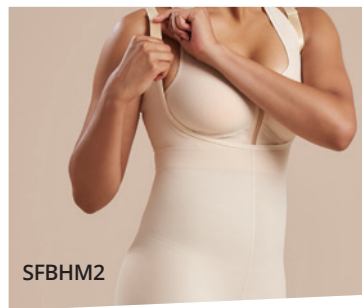
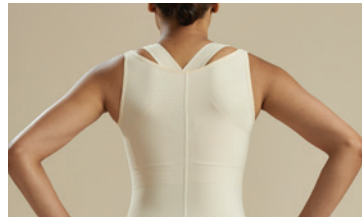


Size	Waist	Hips	Thigh
2XS	22-24 IN	32-34 IN	17.5-18.75 IN
	56-61 CM	81-86 CM	44-48 CM
XS	24-26 IN	34-36 IN	18.75-20 IN
	61-66 CM	86-91 CM	48-51 CM
S	26-28 IN	36-38 IN	20-21.25 IN
	66-71 CM	91-97 CM	51-54 CM
M	28-30 IN	38-40 IN	21.25-22.5 IN
	71-76 CM	97-102 CM	54-57 CM
L	30-32 IN	40-42 IN	22.5-23.75 IN
	76-81 CM	102-107 CM	57-60 CM
XL	32-35 IN	42-45 IN	23.75-25.5 IN
	81-89 CM	107-114 CM	60-65 CM
2XL	35-39 IN	45-49 IN	25.5-27.75 IN
	89-99 CM	114-124 CM	65-70 CM
3XL	39-43 IN	49-53 IN	27.75-30.5 IN
	99-109 CM	124-135 CM	70-77 CM
4XL	43-47 IN	53-57 IN	30.5-33.75 IN
	109-119 CM	135-145 CM	77-86 CM



Points of Measure: Waist, Hip, Thigh, Bust, Underbust

SFBH Family Recover comfortably with the SFBH Family of Garments



Complete Comfort, Optimal Recovery

The **SFBH Family** of garments offers comfortable medical-grade compression, which may optimize results and provide support through each step of the healing process.

Hook-&-eye closures make these garments easy to put on and adjust for full-coverage support and comfort. They are designed to ensure superior fit and adjustability.

Provides Targeted Compression

With high-back coverage and an elevated strap platform, the SFBH garments comfortably smooth bra rolls and provide comfort under the arm. Adjustability ensures optimal fit even through fluctuations in swelling.

Easy to Put On, Easy to Wear

Hook-&-eye closures make it easy to put on SFBH girdles, after surgery and throughout the first step of healing. Slide-adjustable shoulder straps are easy to position.

Complete Adjustability

The 3-row hook-&-eye closures easily adjust to fit size changes due to swelling. The closure can be configured to fit many body types. By hooking different rows, you can create an "hourglass" closure, perfect for narrow waists and wide hips.

Bodysuits: SFBH

Points of Measure: Waist, Hip, Thigh

Size charts on page 22



SFBH FAMILY

3-row Hook-&Eye Closure in Step One: High Back

- Slide-adjustable shoulder straps
- Molded buttocks
- Hook-&eye front closure in Step 1;
No closure in Step 2
- Open/accessible crotch

Sizes: 2XS-4XL

Available in: **H** **B**

Step 1 Hook-&Eye Closures



SFBHA
Bikini-length

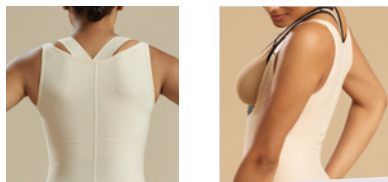
SFBHS
Short-length

SFBHM
Calf-length

SFBHL
Ankle-length

SFBHT
Mid thigh-length

Step 2 No Hook-&Eye Closures



Back Detail

Side Detail



SFBHA2
Bikini-length

SFBHS2
Short-length

SFBHM2
Calf-length

SFBHL2
Ankle-length

Bodysuits with Side Closure: FB

Points of Measure: Waist, Hip, Thigh

Size charts on page 22



FB FAMILY

Side Zipper Closure in Step One; Full Back Coverage

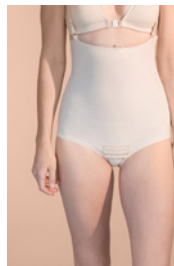
- Slide-adjustable shoulder strap
- Padded hook-&-eye zipper side closures
- Open/accessible crotch
- Zipper closure on left and right sides
- FBA—zipper closure on left side

Sizes: 2XS-4XL

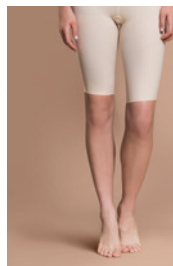
Available in:



Step 1 Padded Zipper Closures



FBA
Bikini-length,
opens to lay flat



FBS
Short-length



FBM
Calf-length

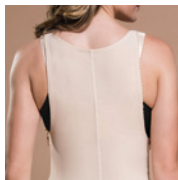


FBL
Ankle-length

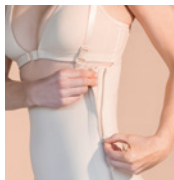


FBBA
Full-bust
coverage

Step 2 No Hook-&-Eye



Back Detail



Side Detail



FBA2
Bikini-length



FBS2
Short-length



FBM2
Calf-length



FBL2
Ankle-length

High-Waist Girdles: LG

Points of Measure: Waist, Hip, Thigh

Size charts on page 22



LG FAMILY

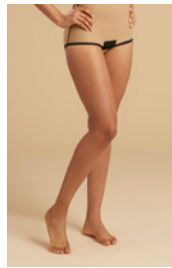
Side Zipper Closure in Step One: High-Waist

- Soft elastic waistband
- Padded hook-&-eye zipper side closure in Step One; no front closure in Step Two
- Open/accessible crotch
- Left & right zipper closure
- LGA—zipper closure on left side

Sizes: 2XS–4XL

Available in: H B MB

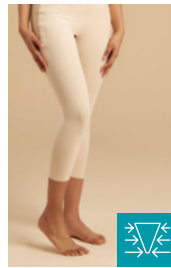
Step 1 Padded Zipper Closures



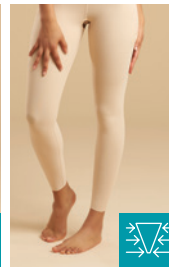
LGA
Bikini-length



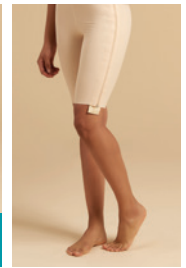
LGS
Short-length



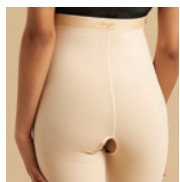
LGM
Calf-length,
Graduated
compression



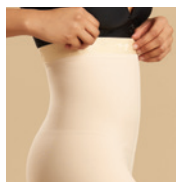
LGL
Ankle-length,
Graduated
compression



LGS-SZ
Short-length,
opens to lay flat



Back Detail

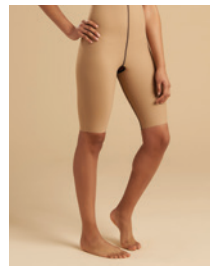


Side Detail

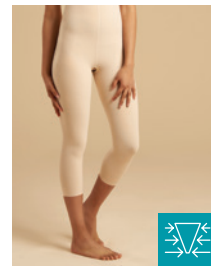
Step 2 Zipperless



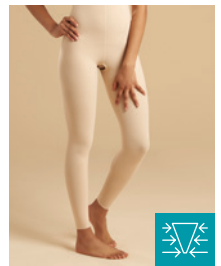
LGA2
Bikini-length



LGS2
Short-length



LGM2
Calf-length,
Graduated
compression



LGL2
Ankle-length,
Graduated
compression

Girdles with Single Side Closure: LL1G

Points of Measure: Waist, Hip, Thigh

Size charts on page 22



LL1GS Step 1

Recover comfortably and protect the skin with mid-thigh coverage that provides ease of movement as you heal.

- Soft comfort elastic band
- Side zipper closure on left side
- Open crotch
- Short-length

LL1GM Step 1

Same design as LL1GS, with extended leg coverage to provide support and comfort as you heal.

- Graduated compression
- Soft comfort elastic band
- Side zipper closure on left side
- Open crotch
- Calf-length

LL1GL Step 1

Protect your skin with full-leg coverage that provides support and comfort as you heal.

- Graduated compression
- Soft comfort elastic band
- Side zipper closure on left side
- Open crotch
- Ankle-length

Sizes: 2XS-4XL

Available in: **H** **B** **MB**



Back Detail

Side Detail

Sizes: 2XS-4XL

Available in: **H** **B** **MB**



Back Detail

Front Detail

Sizes: 2XS-4XL

Available in: **H** **B** **MB**



Back Detail

Front Detail

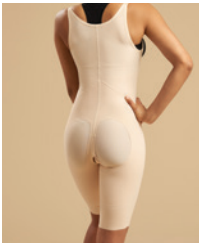
Recovery Solutions for Brazilian Butt Lift

Improve compliance and protect the skin with innovative BBL designs from Marena Recovery.

Points of Measure: Waist, Hip, Thigh

Size charts on page 22

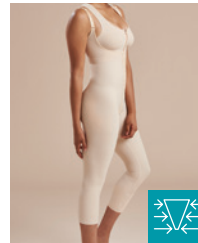
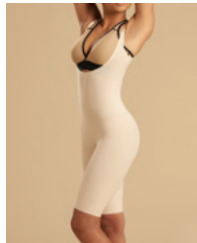
Step 1 | 0-4 weeks after surgery



FBCS
Infinity-Edge

FBCS
Sacral Pad Detail

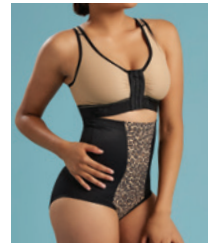
Step 2 | 4-12 weeks after surgery



SFBHS2
Short-Length

SFBHM2
Calf-Length

Step 3 | 12+ weeks after surgery



ME-222
Thigh Slimmer

ME-221
Waist Shaper

Brazilian Butt Lift Garment

Designed to provide smoothing definition in the buttocks, and thigh support. Open crotch.

- Smooth, infinity-edge buttock area
- Slide-adjustable shoulder straps
- Sacral foam pad included for custom sizing

Available in: **H** **B** **MB**

SFBH2 Family

The SFBH Family of garments offers comfortable medical-grade compression, to help support through every step of the healing process.

- Molded buttocks
- Full back coverage
- Graduated compression in SFBHM2

Available in: **H** **B**

Marena Shape

Continue the comfort and support of compression with Marena Shape. Styles include options with:

- High-waist
- Shaping panels
- Comfort outer seams
- **Use Shape Curvy size chart**

Available in: **B** **LB** **MB**

Post-Pregnancy Garments

Points of Measure: Waist, Hip, Thigh

Size charts on page 22



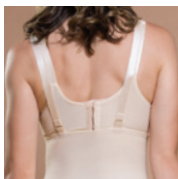
PPGA Step 1

Our expertly-placed supportive panels smooth and shape your waistline, giving you support and confidence under clothes.

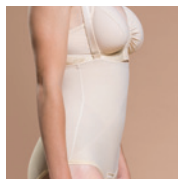
- Slide-adjustable strap
- Accessible crotch opening
- Bikini-length

Sizes: 2XS-4XL

Available in: **H** **B**



Back Detail



Side Detail



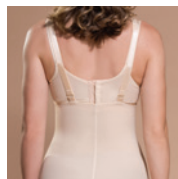
PPGS Step 1

Designed with double and triple support panels to help smooth and support your waist, hips and thighs. This garment moves with you.

- Slide-adjustable strap
- Open crotch
- Short-length

Sizes: 2XS-4XL

Available in: **H** **B**



Back Detail

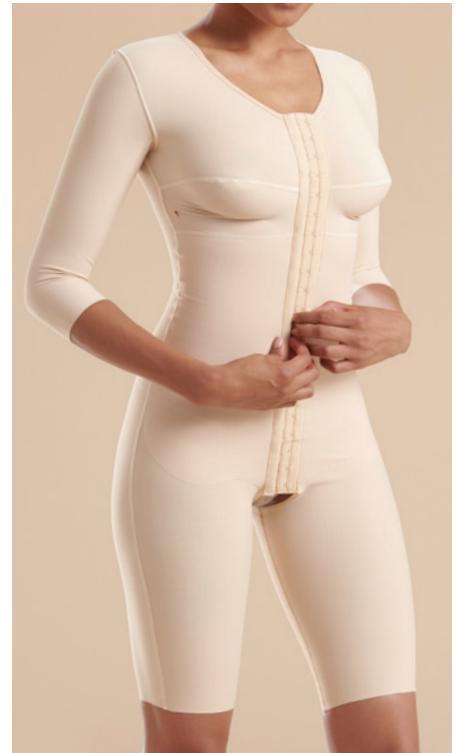


Panel Detail

Bodysuits with Bra

Points of Measure: Waist, Hip, Thigh

Size charts on page 22



FTA Step 1

Heal in comfort with this full-torso bodysuit. Built-in bra fits B-C cups.

- Built-in bra with horizontal cup seam
- Diagonal 3-row hook-&-eye front closure
- Wide shoulder strap with hook-&-eye closure
- Bikini-length

FTS Step 1

Recover with full-body medical-grade compression support. Built-in bra fits B-C cups.

- Built-in bra with horizontal cup seam
- 3-row hook-&-eye front closure
- Wide shoulder strap with hook-&-eye closure
- Short-length

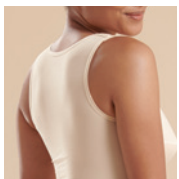
FTRS/SM Step 1

Reinforced panels add an extra layer of support and protection. Built-in bra fits A-C cups.

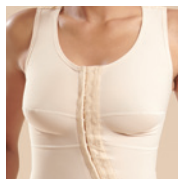
- Built-in bra with horizontal cup seam
- Pre-cut drain hole on each side
- 3-row hook-&-eye front closure
- $\frac{3}{4}$ -length sleeves
- Short-length
- **Bikini-length available — FTRA/SM**

Sizes: 2XS-4XL

Available in: **H** **B**



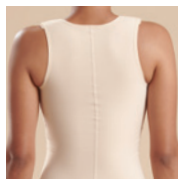
Back Detail



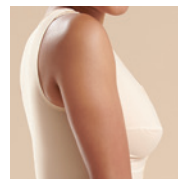
Front Detail

Sizes: 2XS-4XL

Available in: **H** **B**



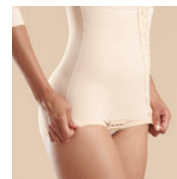
Back Detail



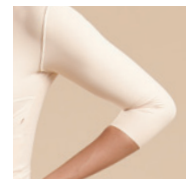
Side Detail

Sizes: 2XS-4XL

Available in: **H** **B**



Bikini-Length



Sleeve Detail

Men's Collections

Our men's collections are designed with attention to length, arm movement and finish details to add comfort for longer wear while supporting the body during and after recovery.

Men's Vests.....32-34
 Men's Girdles & Bodysuits.....35-36

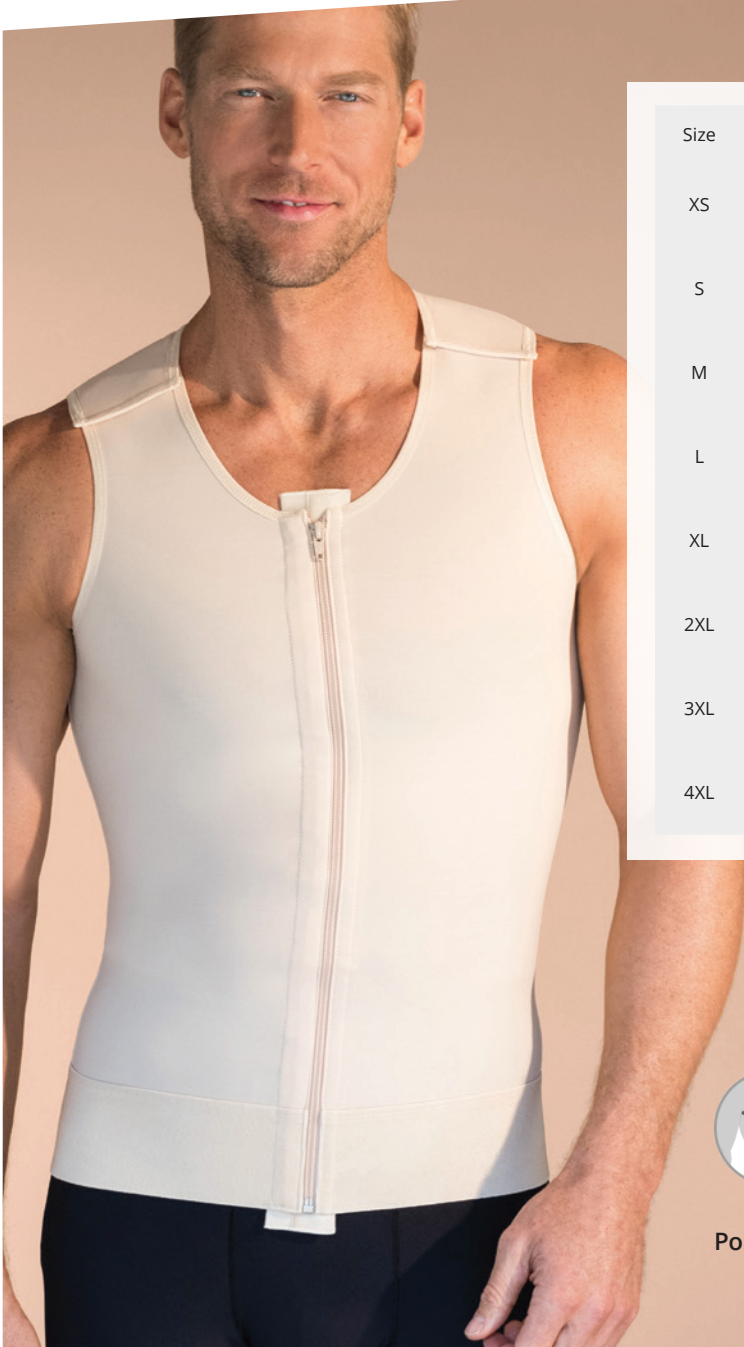
Step 1 & 2

Typical Medical Use:

Liposuction, abdominoplasty, gynecomasty procedures

Available Coverage:

Chest, abdomen, back, upper back and arms



Size	Arm	Chest	Waist	Hips	Thigh
XS	10.5-11.5 IN 27-29 CM	29-33 IN 74-84 CM	23-27 IN 58-69 CM	29-33 IN 79-84 CM	17.75-20.25 IN 45-51 CM
S	11.5-12.5 IN 29-32 CM	33-37 IN 84-94 CM	27-31 IN 69-79 CM	33-37 IN 84-94 CM	20.25-22.75 IN 51-58 CM
M	12.5-13.5 IN 32-34 CM	37-41 IN 94-104 CM	31-35 IN 79-89 CM	37-41 IN 94-104 CM	22.75-25.25 IN 58-64 CM
L	13.5-14.5 IN 34-37 CM	41-45 IN 104-114 CM	35-39 IN 89-99 CM	41-45 IN 104-114 CM	25.25-27.75 IN 64-70 CM
XL	14.5-15.5 IN 37-39 CM	45-49 IN 114-124 CM	39-43 IN 99-109 CM	45-49 IN 114-124 CM	27.75-30.25 IN 70-77 CM
2XL	15.5-16.5 IN 39-42 CM	49-53 IN 124-135 CM	43-47 IN 109-119 CM	49-53 IN 124-135 CM	30.25-32.75 IN 77-83 CM
3XL	16.5-17.5 IN 42-44 CM	53-57 IN 135-145 CM	47-51 IN 119-130 CM	53-57 IN 135-145 IN	32.75-35.25 IN 83-90 CM
4XL	17.5-18.5 IN 44-47 CM	57-61 IN 145-155 CM	51-55 IN 130-140 CM	57-61 IN 145-155 CM	35.25-37.75 IN 90-96 CM



Points of Measure: Chest, Waist, Hips, Thigh, Upper Arm

Men's Vests

Points of Measure: Chest, Waist, Upper Arm

Size charts on page 31



MV/SS Step 1

For full-torso and upper arm compression, this vest has a wide waistband that stays in place and provides comfort all day.

- Front zipper closure
- Short sleeve
- Soft 3-inch elastic waistband



MV Step 1

Easy to put on, this vest maximizes adjustability, and features compression for long-lasting comfort.

- Front zipper closure
- Adjustable shoulder closure
- Soft 3-inch elastic waistband
- Sleeveless



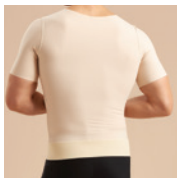
MVS Step 1

This short vest is discreet under clothes, and stays in place after procedures of the chest and back.

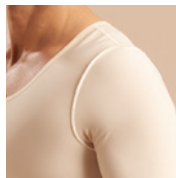
- Front zipper closure
- Adjustable shoulder closure
- Soft 3-inch elastic waistband
- Sleeveless, short abdominal length

Sizes: XS-4XL

Available in: **H** **B**



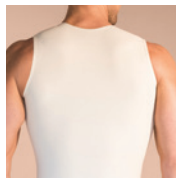
Back Detail



Side Detail

Sizes: XS-4XL

Available in: **H** **B**



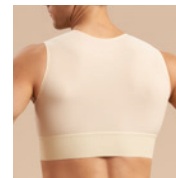
Back Detail



Strap Detail

Sizes: XS-4XL

Available in: **H** **B**



Back Detail



Side Detail

Men's Vests

Points of Measure: Chest, Waist, Upper Arm

Size charts on page 31



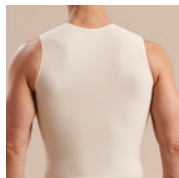
MHV Step 1

Recover comfortably with a vest that is easy to put on and moves with you.

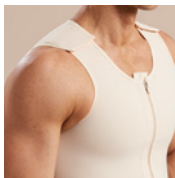
- Front zipper closure
- Adjustable shoulder closure
- Soft, hemmed fabric waistband
- Sleeveless

Sizes: XS-4XL

Available in: **H** **B**



Back Detail



Side Detail



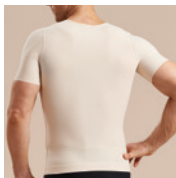
MHV/SS Step 1

This easy-on vest disappears under clothes, and provides total comfort through the healing process.

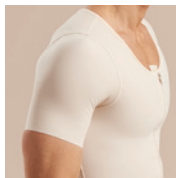
- Smooth/full covered back
- Short sleeve
- Zipper front closure
- Soft, hemmed fabric waistband

Sizes: XS-4XL

Available in: **H** **B**



Back Detail



Side Detail



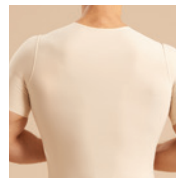
MCV/SS Step 1

Recover comfortably with extended coverage to protect the skin. Smooth hem stays in place.

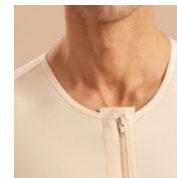
- Front zipper closure
- Short sleeve
- Soft, hemmed fabric waistband
- Full-back and higher neckline

Sizes: XS-4XL

Available in: **H** **B**



Back Detail



Front Detail

Men's Vests

Points of Measure: Chest, Waist, Upper Arm

Size charts on page 31



UV/CP Step 1

This vest features removable loops for drain tubes and pouch for drain bulbs. Includes fabric pouch.

- Front zipper closure
- Adjustable shoulder closure
- Soft 3-inch elastic waistband with drain bulb management system
- Includes fabric pouch

MTT Step 2

Smooth, soft and comfortable, this tank top moves with you and is discreet under clothes.

- Sleeveless
- No closures
- Full-back coverage
- Soft 3-inch elastic waistband

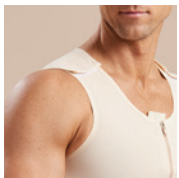
MHTT Step 2

A simple, easy-on step-in design, with a comfortable waistband, that provides all-day support.

- Sleeveless
- Full-back coverage
- No closures
- Soft fabric waistband

Sizes: XS-4XL

Available in: **H** **B**



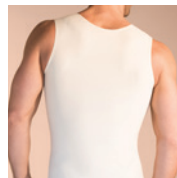
Strap Detail



Pouch Detail

Sizes: XS-4XL

Available in: **H** **B**



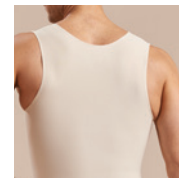
Back Detail



Side Detail

Sizes: XS-4XL

Available in: **H** **B**



Back Detail



Side Detail

Men's Girdles & Bodysuits

Points of Measure: Chest, Waist, Hip, Thigh, Upper Arm Size charts on page 31



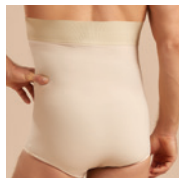
MG Step 1

This high-waist girdle stays in place for comfortable compression on the abdomen and lower back.

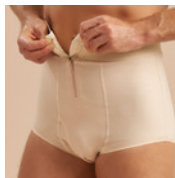
- Front zipper closure
- Soft 3-inch elastic waistband
- Accessible crotch
- Brief-length

Sizes: XS-4XL

Available in: **H** **B**



Back Detail



Front Detail



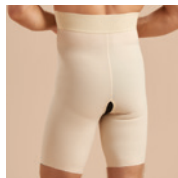
MGS Step 1

With a soft elastic waistband, this girdle stays in place to provide compression support from the abdomen to the thighs.

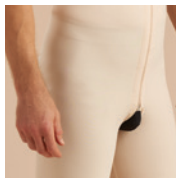
- Front zipper closure
- Soft 3-inch elastic waistband
- Open crotch
- Thigh-length

Sizes: XS-4XL

Available in: **H** **B**



Back Detail



Front Detail



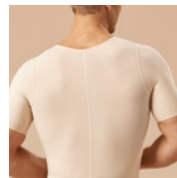
MB/SS Step 1

Recover comfortably with full-body compression support that protects the skin and provide comfort through each step of healing.

- Front zipper closure
- Open crotch
- Short sleeve
- Full-back coverage

Sizes: XS-4XL

Available in: **H** **B**



Back Detail



Sleeve Detail

Men's Bodysuits

Points of Measure: Chest, Waist, Hips, Thigh, Upper Arm Size charts on page 31



MB Step 1

This bodysuit is easy to put on and wear while you recover.

- Sleeveless
- High-back coverage
- Adjustable shoulder closure
- Front zipper closure
- Open crotch



MB2 Step 2

This bodysuit is easy to put on and wear while you heal.

- Sleeveless
- High-back coverage
- Adjustable shoulder closure
- Zipperless
- Open crotch



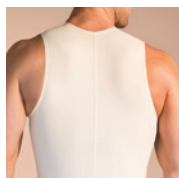
MHB2 Step 2

For the later stages of recovery, this bodysuit is easy to wear under clothes for continued support.

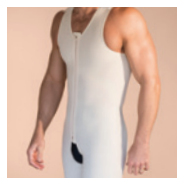
- Sleeveless
- High-back coverage
- Adjustable shoulder closure,
- Zipperless
- Open crotch

Sizes: XS-4XL

Available in: **H** **B**



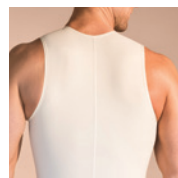
Back Detail



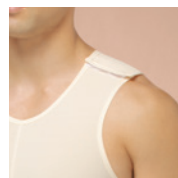
Front Detail

Sizes: XS-4XL

Available in: **H** **B**



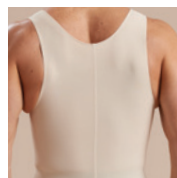
Back Detail



Strap Detail

Sizes: XS-4XL

Available in: **H** **B**



Back Detail



Strap Detail

Unisex Binders

Marena Recovery binders are designed to provide protection and support during the healing process. Our binders are available in solid and split-panel designs for the ultimate comfort during recovery.

Step 1

Typical Medical Use:

Abdominoplasty, abdominal wall reconstruction

Available Coverage:

Abdomen and back



Points of Measure: Waist

Unisex Binders

Points of Measure: Waist

Universal Sizing: Fits up to a 42 inch waist



AB3

Made of supportive elastic, this binder features a hook-&-loop closure.

- 9-inch binder
- Hook-&-loop closure
- Soft elastic fabric

Available in: **W** **B**

AB3X | Fits waist sizes from 42-62 inches or 107-157 centimeters



AB3S3

Split-panel design with adjustable panels that provide support through each step of healing.

- 9-inch binder with adjustable panels
- Hook-&-loop closures
- Soft elastic fabric

Available in: **W**



AB3F7

This supportive elastic binder is lined with our ultra-soft patented fabric and features adjustable hook-&-loop closure.

- 9-inch binder
- Hook-&-loop closure
- Soft elastic fabric with patented fabric lining

Available in: **W**

Unisex Binders

Points of Measure: Waist

Universal Sizing: Fits up to a 42 inch waist



AB4

Made of soft, supportive elastic, this 12-inch binder features a hook-&-loop closure.

- 12-inch binder
- Hook-&-loop closure
- Soft elastic fabric

Available in: **W**

AB4X | Fits waist sizes from 42-62 inches or 107-157 centimeters



AB4S2

Made of supportive elastic, this binder has 2 separating panels with adjustable hook-&-loop closures.

- 12-inch binder with adjustable panels
- Hook-&-loop closures
- Soft elastic fabric

Available in: **W**



AB4F7

This supportive elastic binder is lined with our ultra-soft patented fabric and features adjustable hook-&-loop closure.

- 12-inch binder
- Hook-&-loop closure
- Soft elastic fabric with patented fabric lining

Available in: **W**

Garments with Drain Bulb Management

Points of Measure: Chest/Bust

Size charts on pages 12 and 47



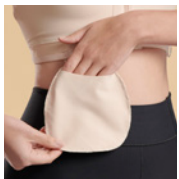
BRA-FLX-19 NEW FLEXFIT™ DRAIN BULB MANAGEMENT

This patent-pending bra is designed for comfortable support and management of drain bulbs and tubes, with side-entry openings for tubes, and included pouches and rings.

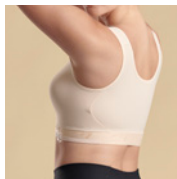
- FlexFit™ cups
- Side-entry opening for tubes
- 2 Pouches and 4 Rings included
- Padded hook-&-eye shoulder closures
- Combined padded hook-&-eye/zipper front closure

Sizes: 30-44 A/A+, 32-44 B/C, 34-46 D/E

Available in: **H** **B**



Pouch Detail



Side Detail



POUCH2 Step 1

Fabric pouch holds a single 400cc drain bulb reservoir. Includes one pair of pouches.

Sizes: Universal

Available in: **H** **B**



Pouch Detail



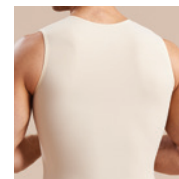
UV/CP Step 1

This vest features removable loops for drain tubes and pouch for drain bulbs. Includes fabric pouch

- Front zipper closure
- Adjustable shoulder closure
- Soft 3-inch elastic waistband with drain bulb management system
- Includes fabric pouch

Sizes: 2XS-4XL

Available in: **H** **B** **C** **M**



Back Detail



Band Detail

Unisex Facial Wear

Promote comfort with medical-grade compression. Marena Recovery face masks come in multiple size options, designed to stay securely in place.

Step 1

Typical Medical Use:

Facial procedures, oral/
maxillofacial surgery

Available Coverage:

Face and neck



Size	Band Size
S	13-15 IN 33-38 CM
M	15-17 IN 38-43 CM
L	17-19 IN 43-48 CM
XL	19-21 IN 48-53 CM



Points of Measure: Neck

Unisex Facial Wear

Points of Measure: Neck

Size charts on page 41



FM100-A

Recover comfortably with the benefits of compression. This mask has a hook-&-loop closure and chin support.

Available in: **H** Sizes: S-XL



FM100-B

Recover comfortably with the benefits of compression. This mask has a hook-&-loop closure and mid-neck coverage.

Available in: **H** Sizes: S-XL



FM100-C

Recover comfortably with the benefits of compression. This mask has a hook-&-loop closure and full neck coverage.

Available in: **H** Sizes: S-XL

Unisex Facial Wear

Points of Measure: Neck

Size charts on page 41



FM300-A

Recover comfortably with the benefits of compression. This mask has a hook-&-loop closure and short neck coverage.

Available in: **H** Sizes: S-XL



FM300-B

Recover comfortably with the benefits of compression. This mask has a hook-&-loop closure and mid-neck coverage.

Available in: **H** Sizes: S-XL



FM300-C

Recover comfortably with the benefits of compression. This mask has a hook-&-loop closure and full neck coverage.

Available in: **H** Sizes: S-XL



FM400

Universal-sized, soft elastic face wrap has hook-&-loop closures and 3 pockets with hot and cold packs.

Available in: **W** Size: Universal



FM410

Recover comfortably with this universal-sized, soft elastic face wrap with hook-&-loop closures for easy adjustment.

Available in: **W** Size: Universal



FM500

Recover comfortably with the benefits of compression. This mask has a hook-&-loop closure and full face/neck support.

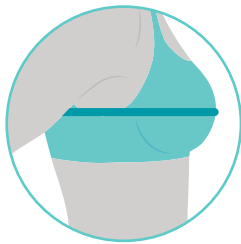
Available in: **H** Sizes: S-XL

How to Ensure the Best Fit

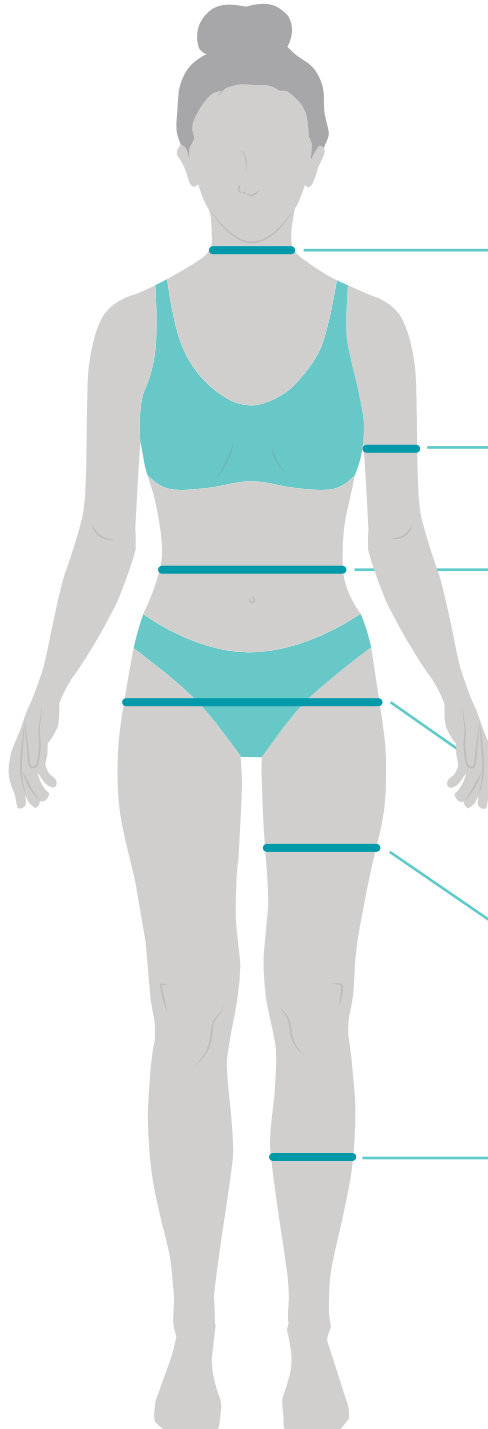
Proper sizing ensures that targeted compression is applied to the correct areas of the body. Follow these sizing guidelines to determine your correct size.



UNDERBUST
Measure directly underneath the bust



BUST
Measure at the widest point of the bust



NECK

Measure at the widest point of the neck

ARM

Measure at the widest point of the arm, while relaxed

WAIST

Measure at the narrowest point between the lowest rib and hips, identified by bending the body to the side

HIP

Measure at the fullest part of the hips and buttocks

THIGH

Measure the widest point of the thigh

CALF

Measure the widest point of the calf, while relaxed

Women's Size Charts

See size charts on page 12 for bra size charts.

Women's Recovery

Size	2XS	XS	S	M	L	XL	2XL	3XL	4XL
Arm	8.75-9.5 IN 22-24 CM	9.5-10.25 IN 24-26 CM	10.25-10.75 IN 26-27 CM	10.75-11.25 IN 27-29 CM	11.25-12 IN 29-30 CM	12-13 IN 30-33 CM	13-14.25 IN 33-36 CM	14.25-15.75 IN 36-40 CM	15.75-17.5 IN 40-44 CM
Bust	30-32 IN 76-81 CM	32-34 IN 81-86 CM	34-36 IN 86-91 CM	36-38 IN 91-97 CM	38-40 IN 97-102 CM	40-43 IN 102-109 CM	43-47 IN 109-119 CM	47-51 IN 119-130 CM	51-55 IN 130-140 CM
Underbust	23-25 IN 58-64 CM	25-27 IN 64-69 CM	27-29 IN 69-74 CM	29-31 IN 74-79 CM	31-33 IN 79-84 CM	33-36 IN 84-91 CM	36-40 IN 91-102 CM	40-44 IN 102-112 CM	44-48 IN 112-122 CM
Waist	22-24 IN 56-61 CM	24-26 IN 61-66 CM	26-28 IN 66-71 CM	28-30 IN 71-76 CM	30-32 IN 76-81 CM	32-35 IN 81-89 CM	35-39 IN 89-99 CM	39-43 IN 99-109 CM	43-47 IN 109-119 CM
Hip	32-34 IN 81-86 CM	34-36 IN 86-91 CM	36-38 IN 91-97 CM	38-40 IN 97-102 CM	40-42 IN 102-107 CM	42-45 IN 107-114 CM	45-49 IN 114-124 CM	49-53 IN 124-135 CM	53-57 IN 135-145 CM
Thigh	17.5-18.75 IN 44-48 CM	18.75-20 IN 48-51 CM	20-21.25 IN 51-54 CM	21.25-22.5 IN 54-57 CM	22.5-23.75 IN 57-60 CM	23.75-25.5 IN 60-65 CM	25.5-27.75 IN 65-70 CM	27.75-30.5 IN 70-77 CM	30.5-33.75 IN 77-86 CM

Women's Shape Straight

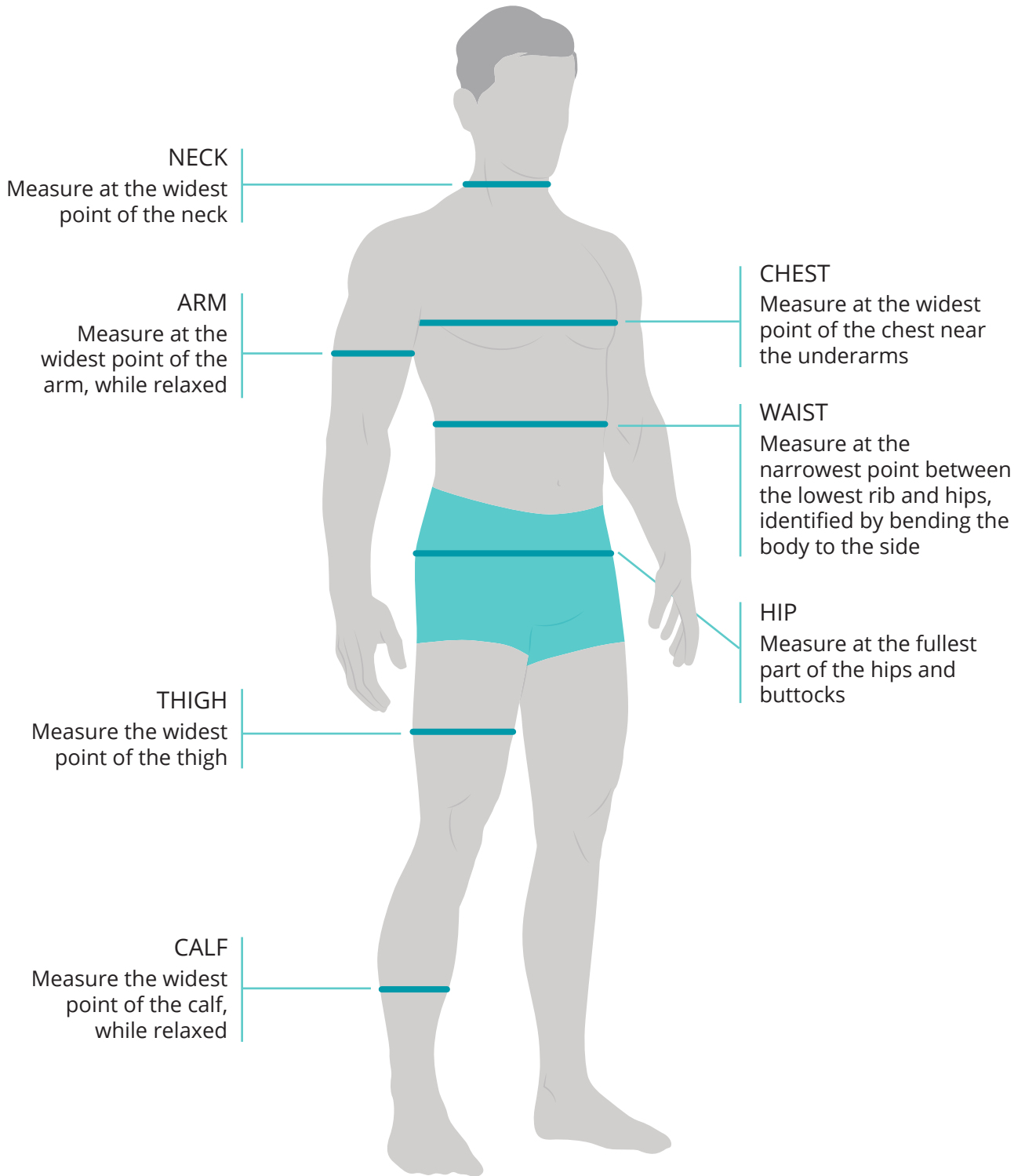
Size	XXS	XS	S	M	L	XL	1X	2X	3X
Bust	33 IN 84 CM	34 IN 86.75 CM	35.25 IN 89.5 CM	36.25 IN 92 CM	37.25 IN 94.5 CM	38.75 IN 98.5 CM	40.25 IN 102.5 CM	42 IN 107 CM	44 IN 112 CM
Waist	27 IN 68.25 CM	27.75 IN 70.25 CM	28.5 IN 72.5 CM	29.5 IN 75 CM	30.5 IN 77.5 CM	32.25 IN 82 CM	34 IN 86.25 CM	36 IN 91.5 CM	38.25 IN 97 CM
Hip	35 IN 89.25 CM	36.5 IN 92.5 CM	37.5 IN 95.25 CM	38.5 IN 97.75 CM	39.5 IN 100.25 CM	41 IN 104 CM	42.5 IN 108 CM	44.25 IN 112.5 CM	46 IN 117 CM
Thigh	21 IN 53 CM	21.25 IN 54 CM	21.75 IN 55.25 CM	22.25 IN 56.5 CM	22.75 IN 57.75 CM	23.5 IN 60 CM	24.5 IN 62.25 CM	25.75 IN 65.5 CM	27 IN 68.5 CM

Women's Shape Curvy

Size	XXS	XS	S	M	L	XL	1X	2X	3X
Bust	33 IN 84 CM	34 IN 87 CM	35 IN 90 CM	36 IN 92 CM	37 IN 95 CM	39 IN 98 CM	40 IN 103 CM	42 IN 107 CM	44 IN 112 CM
Waist	25.25 IN 64.5 CM	26 IN 66.25 CM	27 IN 68.5 CM	28 IN 71 CM	29 IN 73.5 CM	30.75 IN 78 CM	32.5 IN 82.5 CM	34.5 IN 87.5 CM	36.75 IN 93.25 CM
Hip	36 IN 91 CM	37 IN 94.25 CM	38.25 IN 97 CM	39.25 IN 99.75 CM	40.25 IN 102.25 CM	41.75 IN 106 CM	43.25 IN 110 CM	45 IN 114.25 CM	46.75 IN 118.75 CM
Thigh	21.25 IN 54 CM	21.5 IN 55 CM	22 IN 56 CM	22.5 IN 57.5 CM	23 IN 58.75 CM	24 IN 61 CM	25 IN 63 CM	26.25 IN 66.75 CM	27.5 IN 70 CM

What to Expect

Most people find that their size in medical-grade compression differs from their everyday apparel size. Compression garments are meant to have a tight fit, unlike regular clothing.



Men's Size Charts

Men's Recovery

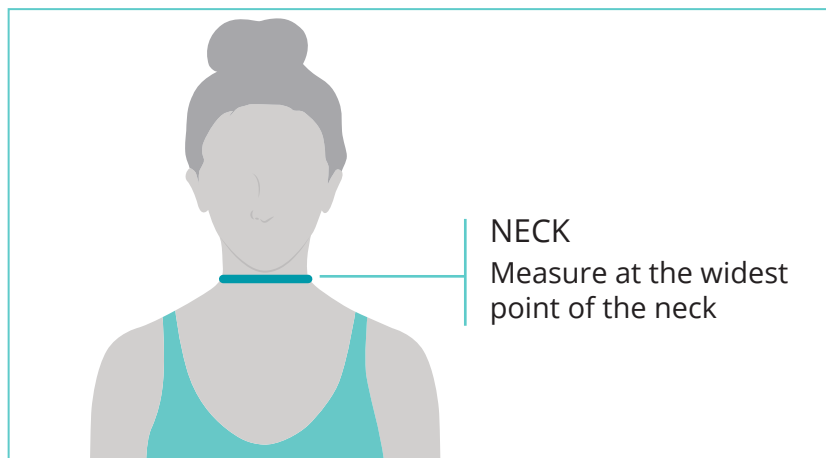
Size	XS	S	M	L	XL	2XL	3XL	4XL
Arm	10.5-11.5 IN 27-29 CM	11.5-12.5 IN 29-32 CM	12.5-13.5 IN 32-34 CM	13.5-14.5 IN 34-37 CM	14.5-15.5 IN 37-39 CM	15.5-16.5 IN 39-42 CM	16.5-17.5 IN 42-44 CM	17.5-18.5 IN 44-47 CM
Chest	29-33 IN 74-84 CM	33-37 IN 84-94 CM	37-41 IN 94-104 CM	41-45 IN 104-114 CM	45-49 IN 114-124 CM	49-53 IN 124-135 CM	53-57 IN 135-145 CM	57-61 IN 145-155 CM
Waist	23-27 IN 58-69 CM	27-31 IN 69-79 CM	31-35 IN 79-89 CM	35-39 IN 89-99 CM	39-43 IN 99-109 CM	43-47 IN 109-119 CM	47-51 IN 119-130 CM	51-55 IN 130-140 CM
Hip	29-33 IN 79-84 CM	33-37 IN 84-94 CM	37-41 IN 94-104 CM	41-45 IN 104-114 CM	45-49 IN 114-124 CM	49-53 IN 124-135 CM	53-57 IN 135-145 IN	57-61 IN 145-155 CM
Thigh	17.75-20.25 IN 45-51 CM	20.25-22.75 IN 51-58 CM	22.75-25.25 IN 58-64 CM	25.25-27.75 IN 64-70 CM	27.75-30.25 IN 70-77 CM	30.25-32.75 IN 77-83 CM	32.75-35.25 IN 83-90 CM	35.25-37.75 IN 90-96 CM

Men's Sport and Shape

Size	2XS	XS	S	M	L	XL	2XL	3XL	4XL
Chest	32 IN 81.25 CM	34 IN 86.5 CM	36 IN 91.5 CM	38 IN 96.5 CM	40 IN 101.75 CM	42 IN 106.75 CM	44 IN 111.75 CM	46 IN 117 CM	48 IN 122 CM
Waist	26 IN 66 CM	28 IN 71 CM	30 IN 76.25 CM	32 IN 81.25 CM	34 IN 86.5 CM	36 IN 91.5 CM	38 IN 96.5 CM	40.5 IN 103 CM	43 IN 109.25 CM
Hip	32 IN 81.25 CM	34 IN 86.5 CM	36 IN 91.5 CM	38 IN 96.5 CM	40 IN 101.75 CM	42 IN 106.75 CM	44 IN 111.75 CM	46 IN 117 CM	48 IN 122 CM
Thigh	19.5 IN 49.5 CM	20.75 IN 52.75 CM	22 IN 56 CM	23.25 IN 59 CM	24.5 IN 62.25 CM	25.75 IN 65.5 CM	27 IN 68.5 CM	28.25 IN 71.75 CM	29.5 IN 75 CM

Unisex Size Charts

Facial Wear



Size	Band Size
S	13-15 IN 33-38 CM
M	15-17 IN 38-43 CM
L	17-19 IN 43-48 CM
XL	19-21 IN 48-53 CM

Garment Care

To preserve the special qualities of your garment and its patented fabric, please follow these UPDATED, no-hassle laundering instructions:

Marena patented fabric is made of 51% TACTEL® Nylon and 49% SOFT LYCRA®.



How to Put on Marena Garments

For styles covering the face or part of the face:

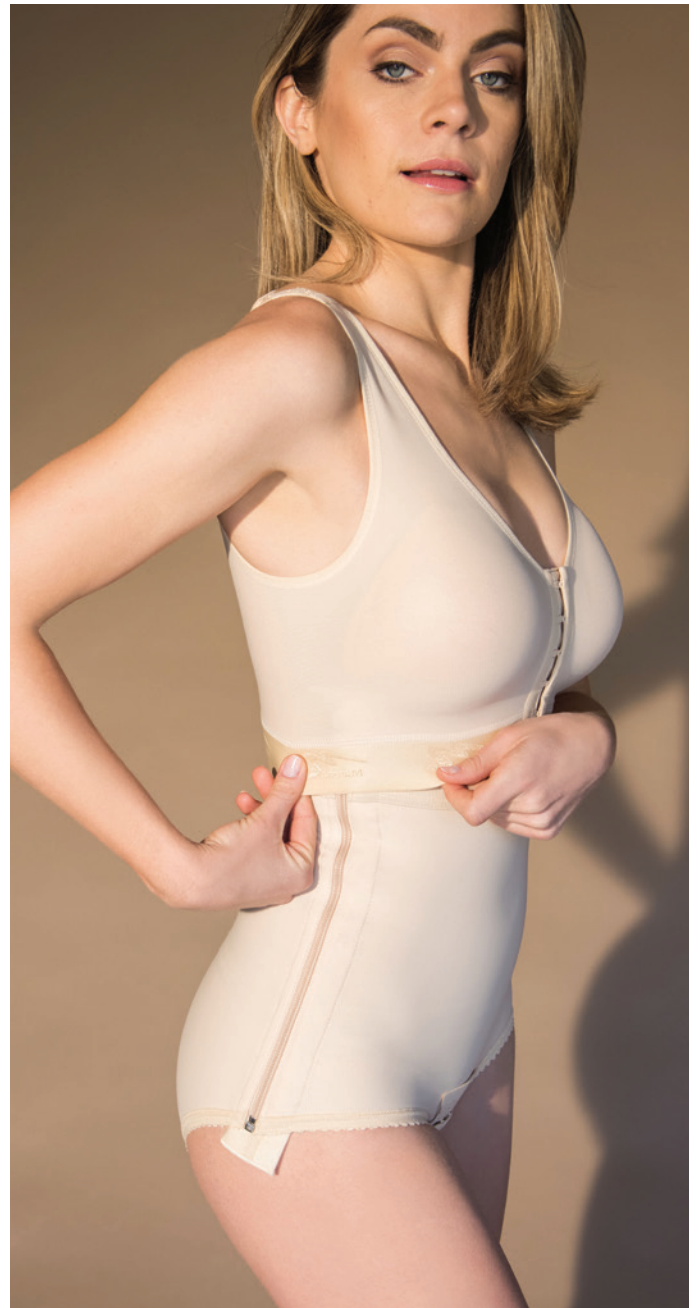
1. Place the chin in the chin cup (located with the vertical seam).
2. Close the hook-&-loop closure over the head, about 2" behind the forehead.
3. Close the second hook-&-loop closure behind the neck.

For styles covering the chest and/or arms:

1. Make sure the size label is on the inside of the garment, in the back.
2. With the garment completely open, slide each arm into the arm holes/sleeves.
3. Close the hooks/zipper. The middle row is usually the best fit for hook-and-eye closures.
4. The shoulder straps, if applicable, may be adjusted as needed.

For garments covering the mid and lower body:

1. Make sure the size label is on the inside of the garment, in the back.
2. Open zipper(s) and/or all of the hooks (if applicable).
3. Place your feet into the leg openings and gently pull the garment up your legs as if you were putting on pantyhose (be careful with sharp fingernails).
4. Align crotch opening as you pull the garment up (if applicable).
5. If the garment has shoulder straps, slide onto each arm and adjust them for best fit.



We Make Ordering Easy!

In the USA

Online: recovery.marena.com

Phone: TOLL FREE: **1-888-462-7362 (1-888-4MARENA)** or **770-822-6925**

It is our pleasure to take your phone orders 8:00AM–7:00PM EST.

E-mail: orders@marenagroup.com

Fax: 678-802-6371

International

Please contact your local distributor or visit

marenagroup.com/about/international to find a distributor near you.



Return Policy Return Information | <https://marenagroup.com/about/returns/>

Merchandise ordered in error may be returned in original unopened packaging. No credit will be given for merchandise after 30 days of receipt.

We guarantee all garments to be free from manufacturing flaw or defect prior to use. Due to government regulations, any Marena garment that has been worn for any length of time cannot be returned unless defective.

Please call Marena Customer Care at 1-888-4-MARENA immediately to report any defects.

A Return Authorization (RA) must be obtained before goods may be returned. To obtain one, contact Customer Care at 1-888-4-MARENA. Please have your order number available.

All returns are subject to a 10% restocking fee.

Customers are responsible for shipping products back to the Marena warehouse. Items must be returned within 10 working days from date of RA issuance.

Credit will be issued based on the invoice amount for the value of the merchandise only, less any applicable restocking fees.

Quality Inspections are performed within 10 business days of receiving a returned garment.

How to return your garment

1. Review the return policy above to ensure your garment is eligible for return.
2. Contact the Customer Care Team at 1888-4-MARENA or email returns@marenagroup.com to initiate a return request.
3. Once your RA number has been issued, return it for processing at the following address:

The Marena Group

**ATTN: Returns Department
650 Progress Industrial Blvd.
Lawrenceville, GA 30043**

We recommend selecting a shipping method with tracking and retaining your tracking number until return is confirmed to be received at Marena.

For additional questions or assistance, please contact the Marena Customer Care Team at 1-888-4-MARENA or email returns@marenagroup.com.

Exchanges

Marena does not offer product exchanges. If a replacement garment is desired, please place a new order and initiate a return request for your current garment (see return instructions above) separately. This way you will receive your new garment as quickly as possible.

Product Index by Procedure and by Step

Women

ABDOMINOPLASTY

STEP 1	PAGE
FBA	25
FBL	25
FBS	25
FTA	30
FTRS/SM	30
FTS	30
LGL	26
LGS	26
LGS-SZ	26
LL1GL	27
LL1GM	27
LL1GS	27

STEP 2	PAGE
LGA2	26
LGL2	26
LGM2	26
SFBHL2	25

STEP 3	PAGE
ME-221	28
ME-222	28

ABDOMINOPLASTY AND WALL RECONSTRUCTION

STEP 1	PAGE
AB3	38
AB3F7	38
AB3S3	38
AB4	39
AB4F7	39
AB4S2	39

BRACHIOPLASTY

STEP 1	PAGE
FV2L	20
FV2M	20
FVOM	20
GFVM	19
SL	21
SM	21

BRAZILIAN BUTT LIFT

STEP 1	PAGE
FBCS	28
SFBHS	24

STEP 2	PAGE
SFBHA2	25
SFBHM2	25
SFBHS2	28

STEP 3	PAGE
ME-222	28

BREAST AUGMENTATION

STEP 1	PAGE
B2	13
B15	14
B01G	13
BW-9	17
FVNS	19
FVNSZ	19
ISB	17
ISB-05	17
ISBX	17

STEP 2	PAGE
B09Z	16
BNRZ	16

STEP 3	PAGE
ME-813	shape.marena.com
B11	14

BREAST REDUCTION

STEP 1	PAGE
B19	15

STEP 2	PAGE
B01G	13

STEP 3	PAGE
BNRZ	16

FACIAL PROCEDURES

STEP 1	PAGE
FM100-A	42
FM100-B	42
FM100-C	42
FM300-A	43
FM300-B	43

FM300-C	43
FM400	43
FM410	43
FM500	43

LIPOSUCTION

STEP 1	PAGE
FBA	25
FBL	25
FBM	25
FBS	25
FTA	30
FTRS/SM	30
LGA	26
LGM	26
LGS	26
LGS-SZ	26
LL1GL	27
LL1GM	27
LL1GS	27
SFBHA	24
SFBHL	24
SFBHS	24
SFBHT	24

STEP 2	PAGE
LGA2	26
LGL2	26
LGM2	26
SFBHL2	25
SFBHM2	28
SFBHS2	28

STEP 3	PAGE
ME-221	28

POST-PREGNANCY

STEP 1	PAGE
PPGA	29
PPGS	29

STEP 2	PAGE
LGA2	26
LGL2	26
LGM2	26
LGS2	26

STEP 3	PAGE
ME-222	28

Product Index by Procedure and by Step

Men

ABDOMINOPLASTY AND WALL RECONSTRUCTION

STEP 1	PAGE
AB3	38
AB3F7	38
AB3S3	38
AB4	39
AB4F7	39
AB4S2	39

BODY SCULPTING: FULL BODY

STEP 1	PAGE
MB	36
MB/SS	35
MG	35
MGS	35

STEP 2	PAGE
MB2	36
MHB2	36

BODY SCULPTING: UPPER BODY

STEP 1	PAGE
MCV/SS	33
MHV/SS	33

MHV	33
MV/SS	32
MV	32
MVS	32
UV/CP	34

STEP 2	PAGE
MHTT	34
MTT	34

STEP 3	PAGE
ME-1000 ..	shape.marena.com
ME-1001 ..	shape.marena.com

FACIAL PROCEDURES

STEP 1	PAGE
FM100-A	42
FM100-B	42
FM100-C	42
FM300-A	43
FM300-B	43
FM300-C	43
FM400	43
FM410	43
FM500	43

LIPOSUCTION

STEP 1	PAGE
MB/SS	35
MB	36
MCV/SS	33
MHV	33

STEP 2	PAGE
MB2	36
MHB2	36
MHTT	34
MTT	34

STEP 3	PAGE
609	sport.marena.com
625	sport.marena.com
ME-1000 ..	shape.marena.com
ME-1001 ..	shape.marena.com



For more information on the power and benefits of medical-grade compression, visit recovery.marena.com



Marena Delivers the Best in Comfortable Compression

Our mission is to help patients around the world **heal in comfort, recover with confidence** and **live better**. But at the heart of the Marena mission—what we do and why we do it—is **the customer**.

Manufactured in the USA, with heart.



#marenacares

Our company actively supports local and national programs as well as breast cancer research.

ISO 9001 & 13485 Certified

90-2009



The Marena Group, LLC
650 Progress Industrial Blvd
Lawrenceville, GA 30043
1-888-462-7362

www.marengroup.com

90-2009-07